



GAT MONTHLY MEMBERSHIP PROGRESS REPORT

Results as of: 3/31/2023

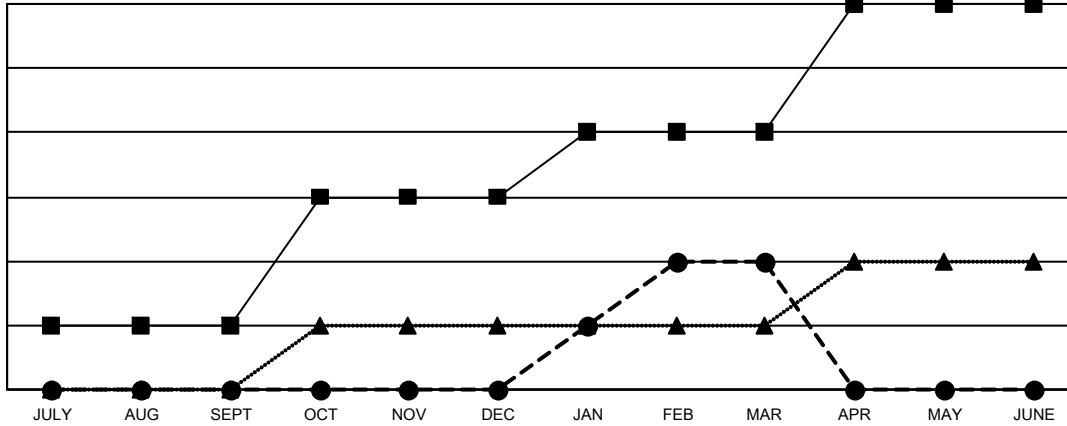
Multiple District 16

LOCATION: NEW JERSEY

Clubs			
RESULTS FOR 2022-2023			
QUARTER	NEW CLUB GOAL	NEW CLUBS	DROPPED CLUBS
JULY/AUG/SEPT	1	0	1
OCT/NOV/DEC	2	0	6
JAN/FEB/MAR	1	2	0
APR/MAY/JUNE	2	0	0

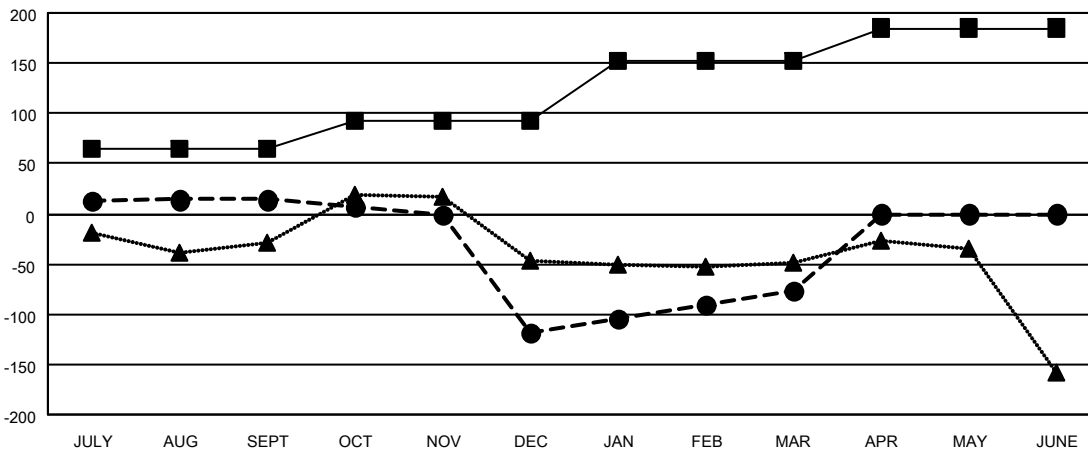
Members			
RESULTS FOR 2022-2023			
QUARTER	MEMBER GROWTH NET GOAL	MEMBER GROWTH ACTUAL	DROPPED MEMBERS ACTUAL (including transfers)
JULY/AUG/SEPT	65	114	92
OCT/NOV/DEC	28	93	219
JAN/FEB/MAR	60	173	123
APR/MAY/JUNE	32	0	0

GOALS AND ACTUAL NEW CLUBS CUMULATIVE



- - CURRENT YEAR GOALS FOR NEW CLUBS
- - CURRENT YEAR ACTUAL NEW CLUBS
- ▲ - LAST YEAR ACTUAL NEW CLUBS

GOALS AND ACTUAL MEMBERS CUMULATIVE



- - MEMBER GROWTH NET GOAL
- - MEMBER GROWTH ACTUAL
- ▲ - LAST YEAR MEMBERSHIP ACTUAL

DROPPED CLUBS: 7	76 CLUBS OF 171 ADDED 1 OR MORE NEW MEMBERS	<u>GENDER DISTRIBUTION</u>	
<u>DROPPED MEMBERS</u>		MALE	2,539 (64.92%)
DECEASED	53	FEMALE	1,365 (34.90%)
CLUB CANCELLED	78	NON BINARY	0 (0.00%)
OTHER	303	PREFER NOT TO ANSWER	7 (0.18%)
TOTAL	434	TOTAL FAMILY UNIT MEMBERS 738	
	CLICK HERE FOR CUMULATIVE MEMBERSHIP DATA	FAMILY MEMBERS PAYING HALF DUES 386	